

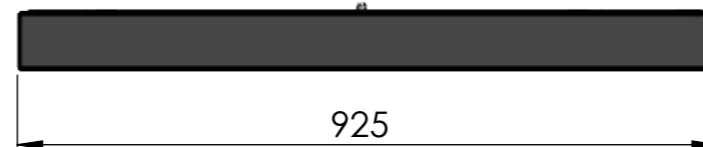
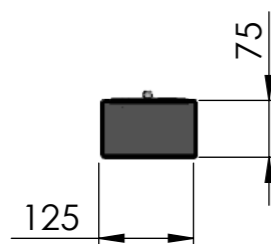
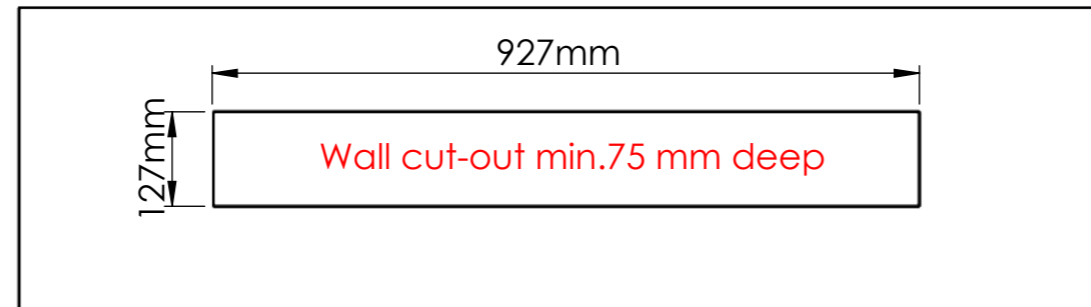
# Built-in Burner 900mm with safety chamber Black


## Technical Data

Capacity 4,2 L  
 Burning time 5 -10 h  
 Heat Outout 2,4 - 4,8 kw  
 Net weight 12 kg.  
 Finish: brushed stainless steel

## Features:

Decofame® brushed stainless steel manual burner  
 Adjustable flame height  
 No chimney required  
 No ash, smoke or soot  
 Outdoor use  
 Safety chamber with lip  
 Shutter tool  
 3M Sponge



<b>Dimensions are in millimeters</b>		 Decoflame ApS Vang Mark 2 9380 Vestbjerg TLF: +45 96 30 48 00 www.decoflame.com	<b>SCALE: 1:10</b>
REVISION: -	Date 07-07-2021		FORMAT: A3
Author: TTK		Order Number - Customer - Reference: PRINCIPLE Built-in burner 900mm	
Copyright of Decoflame ApS Denmark, whose property this document remains. No part thereof may be disclosed, copied, duplicated or in any other way made use of, except with the approval of Decoflame ApS.		Customer Approval Signature - Date	